

MONITOR LIGHT STATUS WITH AUTOMATIC START/STOP ON DESKTOP

USING WEMOS D1, LDR SENSOR, 1-CHANNEL RELAY AND IOT PLATFORM
(THINGIO.AI)



FEATURES PRICING FAQ SUPPORT BLOG TUTORIAL API DOCS

LOGIN

REGISTER

Best IoT Platform for Raspberry Pi, NodeMCU and ESP8266 Projects

Create Stunning Dashboards and Vizualzitions for your IoT Projects

Get Started


Watch Demo

Join Our Referral Program

Invite





 Continue with Google

or

SIGNUP TO GET INSTANT ACCESS.

Name

Enter Name

Email address

Enter email

Password

Retype Password

Contact Number*

Enter Mobile Number

I'm not a robot



I am continue with Google account

Then as your wish... 😊



Projects

+ Create new project

Search By Project Name

LDR Light Control ⚙️
ID : 5c023d0100581d574cb33ff6 Dec 1, 2018
[View Project](#)

Temp Control Fan ⚙️
ID : 5c017f3d16052f680fa56062 Nov 30, 2018
[View Project](#)

Temperature ⚙️
ID : 5c00ff03562a9568106423fb Nov 30, 2018
[View Project](#)

People Counter ⚙️
ID : 5bee74174139ed3c65cf32a8 Nov 16, 2018
[View Project](#)

Ultra Sonic ⚙️
ID : 5bed77664139ed3c65cf25a7 Nov 15, 2018
[View Project](#)

Here I am already done with this project so it's showing LDR Light Control.
So you have to create new project.





Projects

+ Create new project

🔍 Search By Project Name

View Project

Create A Project ✕

Project Name

Create

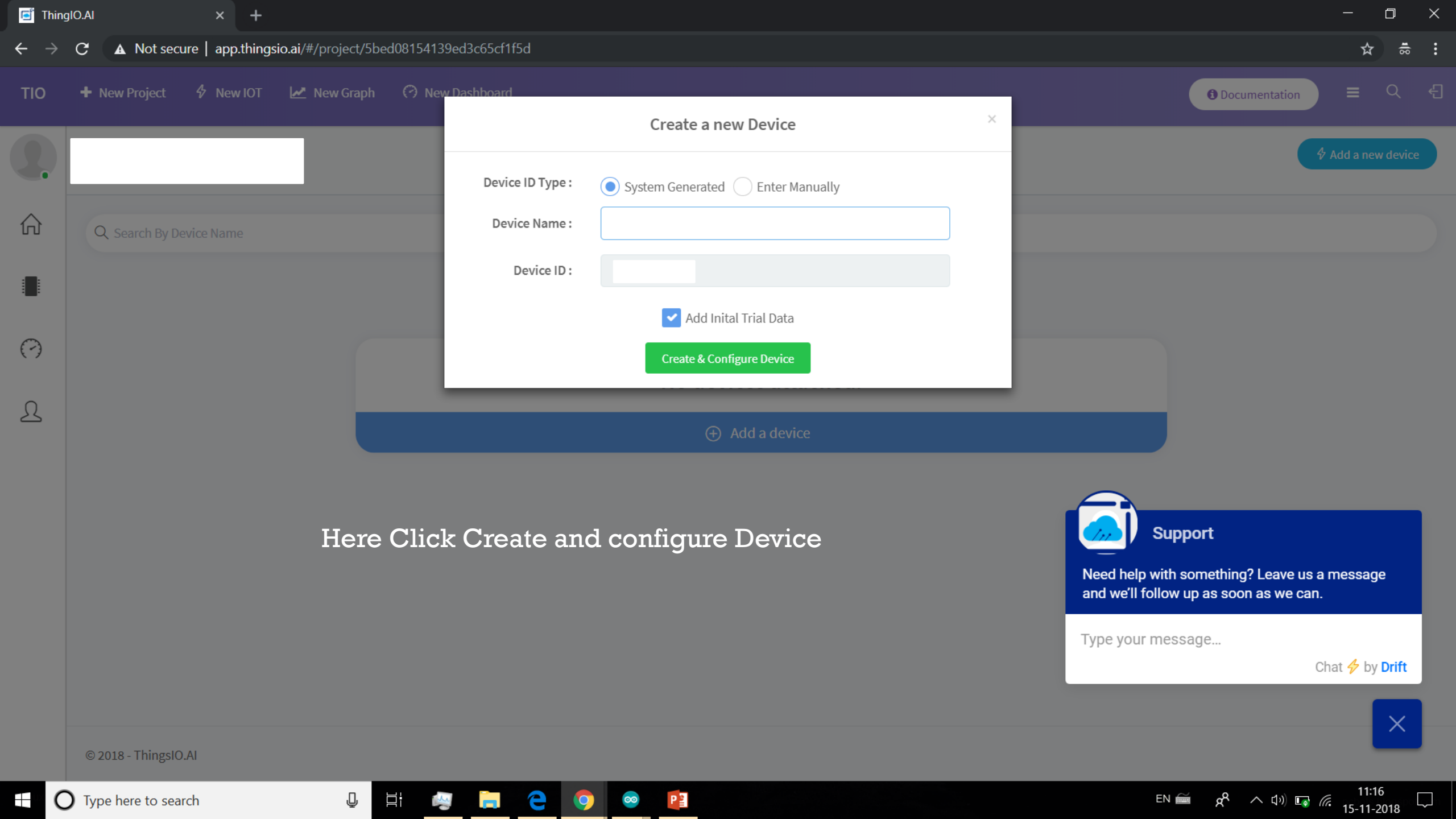
Support

Need help with something? Leave us a message and we'll follow up as soon as we can.

Type your message...

Chat ⚡ by **Drift**

✕



Create a new Device

Device ID Type : System Generated Enter Manually

Device Name :

Device ID :

Add Initial Trial Data

Create & Configure Device

Here Click Create and configure Device



Support

Need help with something? Leave us a message and we'll follow up as soon as we can.

Type your message...

Chat by Drift





Configure Device - [REDACTED]

General

Device ID

Created - Nov 15, 2018
Updated - Nov 15, 2018

Energy Parameter*

Transformation*

Argument*

Aggregate

Parameters

<input type="text"/>	decimal	<input type="button" value="x"/>
<input type="text"/>	decimal	<input type="button" value="x"/>

And then click on Update Device

Support

Need help with something? Leave us a message and we'll follow up as soon as we can.

Type your message...

Chat ⚡ by Drift



Configure Device - [redacted]

General

Device ID
[redacted]

Created - Nov 15, 2018
Updated - Nov 15, 2018

Energy Parameter* [redacted]

Transformation* Multiply


Argument* 1

Aggregate

Parameters

[redacted] decimal [X]


[redacted] decimal [X]



Device updated successfully

OK

Update Device Close



Support

Need help with something? Leave us a message and we'll follow up as soon as we can.

Type your message...

Chat ⚡ by Drift

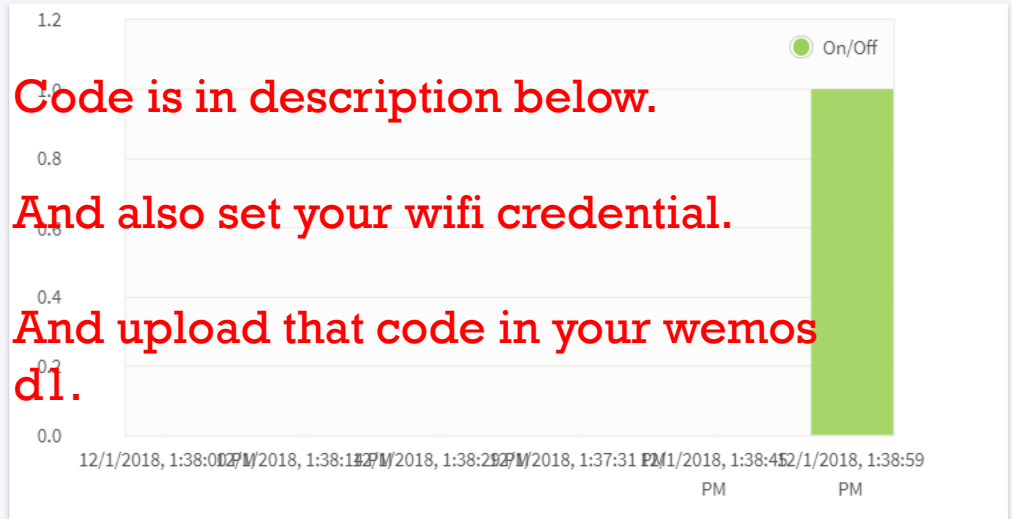




Data (0)

1

Units



Data Point
Dec 1, 2018, 1:38:59 PM

22
LDR

1
On/Off

Last 5 data Refresh

1	Slave ID - 1	Dec 1, 2018, 1:38:59 PM
2	Slave ID - 1	Dec 1, 2018, 1:38:45 PM
3	Slave ID - 1	Dec 1, 2018, 1:38:29 PM
4	Slave ID - 1	Dec 1, 2018, 1:38:14 PM
5	Slave ID - 1	Dec 1, 2018, 1:38:14 PM

Device Graphs

Here LDR is 22. (Under 50)

So light Is On.

No Graphs Created

Create Graph



Device - Light Control

Device ID : 6112058 | Project : LDR Light Control

[Quick Analysis](#)
[Sample Codes](#)
[Create Graph](#)
[Configure Device](#)



Data (On/Off)

0

Units



Data Point

Dec 1, 2018, 1:38:29 PM

963

LDR

0

On/Off

Last 5 data

Refresh

1	Slave ID - 1	Dec 1, 2018, 1:38:29 PM
2	Slave ID - 1	Dec 1, 2018, 1:38:14 PM
3	Slave ID - 1	Dec 1, 2018, 1:38:00 PM
4	Slave ID - 1	Dec 1, 2018, 1:37:45 PM
5	Slave ID - 1	Dec 1, 2018, 1:37:31 PM

Device Graphs

**Here LDR is 963. (Over 50)
So light Is Off.**

No Graphs Created

Create Graph

